



FREDERICK CHAPTER NO. 1 THE IZAAK WALTON LEAGUE OF AMERICA

Chapter Web Site: <http://www.frederickiwa.org>
Like Us on Facebook: <https://www.facebook.com/frederickiwa>
Chapter Calendar: <http://www.frederickiwa.org/calendar.html>

NEWSLETTER

February 2024

President Michael Morgan	Vice President Tracy Hickman	Secretary Ronald Colbert	Treasurer Jim Stewart	Membership Secretary Ron Colbert
Board Member Hiram Escabi	Board Member Michael Moneypenny	Board Member Preston Wood	Board Member Ben Kelkye	Board Member Vineet Kewalramani
Newsletter Editors Preston Wood, Josh Phipps, Lisa Merriam				
Send submissions or articles for the newsletter to newsletter@frederickiwa.org . Let us know if you are not receiving the newsletter.				

Important Dates

05 Feb – Conservation Committee Meeting, 6pm	11 Feb – Youth Group Practice 12:30 – 4pm
13 Feb – Board of Directors Meeting, 6:30pm	25 Feb – Youth Group Practice 12:30 – 4pm
13 Feb – Membership Meeting, 7pm	27 Feb – Frederick County Sportsman’s Council, 7pm
10 Feb – Conservation Trail Clean Up, 7:30am	



Bluebird box #3 beside the gun range at the IWLA Frederick #1 Chapter House.

In this week’s newsletter: Aquatic invasive species, outdoor recreation, conservation news, impervious surfaces environmental impact, Sabillasville Environmental School presentation, Forest Stewardship Plan, Save Our Streams, Conservation Trail maintenance day, aquatic chloride level criteria, new education schedule for 2024, and much more!

How do aquatic invasive species spread?



Many aquatic invasive species arrive in America by being accidentally transported here in the ballast water of oceangoing ships - and then they move from lake to lake by hitching rides with unsuspecting boaters and anglers. A whole population of invasive plants or mussels can start from a tiny fragment of leaf or a microscopic larva, so it's easy for these invaders to reach new water bodies by clinging to our gear. Prevention is the key to stopping aquatic invaders. Always thoroughly clean, drain, and dry all your equipment every time you come off the water. This way, plants and animals won't tag along to the next lake with you. [Learn more about invasive species at this IWLA.org link.](#)

CONSERVATION NEWS

Water Quality and Impervious Surfaces Impact on Water Quality in County Creeks



*A group of children work to gather trash on April 16, 2016, from the banks of a pond in the Frederick Municipal Watershed.
Photo by Graham Cullen*

In a January 25, 2024 article written by [Gabrielle Lewis](#) from the Frederick News Post, she writes "Frederick County is workshopping a document that analyzes local water limitations and issues to guide future growth and development plans' water needs. Drafted chapters of the document, known as the Water Resources Element, show that the county has seen an increase in impervious surfaces in multiple watersheds over the last decade, which can lead to a notable decline in watershed health.

Impervious surfaces, such as parking lots, buildings, roofs and roads, don't allow water to soak into the ground. The more area of a watershed covered with impervious surfaces, the more likely the watershed will have poorer health and little to no endangered species present. Three watersheds — Carroll Creek, Ballenger Creek and Upper Bush Creek — have over 10% of their respective areas covered with impervious surfaces.

In 2010, only the Carroll Creek and Ballenger Creek watersheds, which are more developed and include the city of Frederick, exceeded the 10% threshold. Eleven other watersheds in the county have 5% to 10% of their areas covered with impervious

surfaces. The watershed with the poorest stream health is Glade Creek, which falls into this threshold."

It's interesting that in a 2020 research posting from Ben Alexandro, Water Policy Director for Maryland League of Conservation Voters, he wrote, "Between 2012 and 2019, according to the County government, Frederick County experienced a net loss of about 480 acres of forest, or an average of nearly 70 acres annually. This is because forward-thinking "no net loss of forest" policies were repealed in 2011 by the County Council [Blaine Young, Council President era]."

By 2020, these 2011 policies were reinstated by new County legislation. Per the Potomac Conservancy in their 2020 article, "...the Frederick County Council unanimously voted on July 21, 2020 to reinstate a "no net loss of trees" requirement in the Forest Resource Ordinance (Bill 20-08) - a protection that was previously rolled back in 2011. And after weeks of contentious debate, on August 4, 2020, the Council unanimously voted to pass a Zoning Amendment (Bill 20-07) requiring environmental resources to be identified and protected for all future development projects! A proposed amendment to grandfather two development projects near Lake Lingore under the old zoning rules failed 4-3."

However, considering the current record housing construction boom in Frederick County, our Chapter Conservation Committee wonders how the current County forest acreage have been impacted. In a November 18, 2022 article in Bay Journal, Timothy B. Wheeler writes, " "Maryland continues to lose forest," said Erik Fisher, assistant Maryland director for the Chesapeake Bay Foundation, "and this comes after 30 years of forest conservation rules in place, and a decade after Maryland set a goal to stop forest loss." The study does note that even though the overall loss of forest and tree canopy is slowing, losses to development and forest fragmentation remain significant, particularly in rapidly urbanizing central Maryland. Six of the state's 23 counties – Prince George's, Montgomery, Anne Arundel, Charles, Calvert and Baltimore – accounted for almost 70% of all tree canopy and forest losses."

Lewis continues in her Jan 25, 2024 Frederick News Post article, "According to the chapter on water hazards, when a watershed has over 10% of impervious coverage, there is a "measurable decline" in water quality and the presence of aquatic life. Watersheds with less than 5% of impervious coverage have clean and cool water. Many salamander and fish species, such as trout or endangered species, can be found. Watersheds with 5% to 10% impervious coverage have warmer waters, pollution-tolerant fish species, no brook trout and few rare and endangered species. Watersheds with over 10% impervious coverage have warm waters, no trout, no endangered stream species and very few fish and salamander species. Other watersheds with poor stream health, in addition to Glade Creek, include Tuscarora Creek, Carroll Creek, Ballenger Creek and Fishing Creek."

Our Chapter Conservation Committee water testing team plans to conduct water tests of Tuscarora Creek starting April this year and can verify the condition of the creek.

However, our testing of Ballenger Creek at Ballenger Creek Park last year determined the creek to be healthy contradicting Lewis' article.

Sources:

[Frederick County reviewing document that guides future water use](#)

Frederick News Post, January 25, 2024

[All Hands On Deck For Frederick County Forests](#)

Maryland League of Conservation Voters, December 15th, 2020

[Frederick Takes Steps to Prevent Forest Loss](#)

Conduit Street, July 22, 2020

[Frederick County passes strongest tree protection measures in all of Maryland](#)

Potomac Conservancy, August 7, 2020

[Maryland still losing forests and trees, though at a slower rate, study finds](#)

Bay Journal, Nov 18, 2022

Outdoor Recreation



The Izaak Walton League was founded by people who enjoyed hunting, fishing, and other outdoor recreation, and they knew these activities depend on clean water, abundant wildlife, and a healthy environment. Today, the League works to conserve natural resources and promote sustainable outdoor recreation. If you are looking for a place to enjoy outdoor recreation, from fishing and hiking to target shooting and camping, League chapters nationwide offer great options. [Learn more about Outdoor Recreation at this IWLA.org link.](#)

CHAPTER CONSERVATION ACTIVITIES

Our Chapter is dedicated to supporting the Izaak Walton League's [Mission Statement](#): "To conserve, restore, and promote the sustainable use and enjoyment of our natural resources, including soil, air, woods, waters, and wildlife."

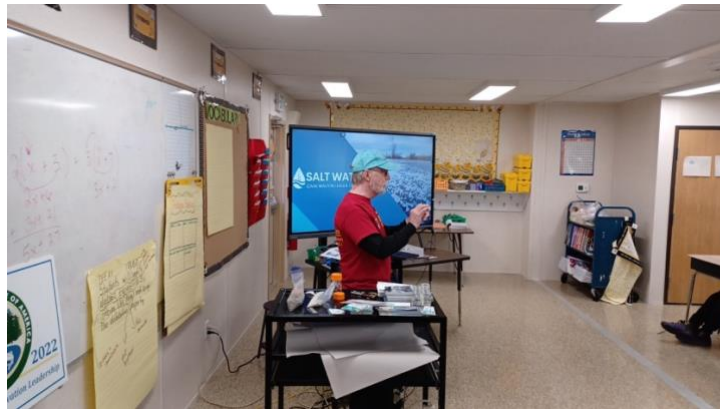
Our monthly Conservation Committee meetings are normally held the first Monday of the month; all Chapter members are welcome to attend. Our next meeting is Monday, February 5, 2024, at 6pm at the Chapter Clubhouse.



Barb Doney, Program Director for the Sabillasville Environmental School, invited the IWLA Frederick Chapter back for their Winter Festival on Friday, January 26, 2024. IWLA Frederick Chapter presentation team consisted of Ikes Steve Meyer and Chris Barrett, and they presented the IWLA Salt Watch program to the 6th and 7th grade. Each of the two sessions had about 20 students.

Presentation materials were supplied by Abby Hileman, IWLA Salt Watch coordinator. Abby provided us with a super Power Point Presentation on Salt Watch along with flyers, Salt Watch stickers, and ten Salt Watch Testing Kits.

The students were very engaged, and it was perfect timing since we just had two snowstorms. They understood that even though salting highways and streets can help prevent accidents and bodily injury, salting roadways can also have consequences for the environment and negatively impact animals, aquatic creatures, and plant life as well as lead to expensive corrosion on roads, bridges, and automobiles.



Chris Barrett presenting chloride testing to Sabillasville Environmental School students.

The presentation team demonstrated Chloride testing for the students with water samples brought in from Ballanger Creek, Catoctin Creek and Carroll Creek. The results were 85ppm, 44ppm and 143ppm respectively. We discussed why the Carroll Creek reading was higher (and troubling) in that the sample was taken in downtown Frederick at Baker Park. 100ppm or below is considered naturally occurring and not dangerous to plants and animals.

The students were asked to help us with Salt Watch data collection and five test kits were provided for each grade. A student was given a kit if he or she promised to test a stream before our next snowstorm and after as well as upload the results to our database. They had to get permission from their parents and, if applicable, a landowner if they were sampling on private property. We also discussed how to safely take water samples. We had several excited students and teachers interested in testing. Those to that didn't get

Salt Watch test kits were directed to the flyer where they could [order kits for free from the IWLA website](#).

It was a very rewarding day for the students, teachers, and Frederick Chapter Team. Bard invited the presentation team to their Spring Festival focusing on farming and gardening to introduce the [IWLA Nitrate Watch program](#).



The IWLA Frederick #1 Chapter has received a [Forest Stewardship Plan](#) from the Maryland Department of Natural Resources Forester, Thomas Keenan resulting from a two-day assessment of our Chapter forest. This long-range plan provides wildlife, forestry, recreation, soil, and water management recommendations that consider landowner objectives and the capability of the resource. The plan also provides the Chapter with an assessment of the present condition of our forest and offers long-term recommendations on how to best manage the resource. This plan is required to apply for State and Federal fund cost-share programs. Steve Meyer will give a presentation on this Plan at the February Membership meeting and what it means for the Chapter.



IWLA Frederick Chapter #1 Save our Streams program provides testing and long-term water chemistry data on select streams in Frederick County Maryland. The Izaak Walton League's Save Our Streams program is the only nationwide program training volunteers to protect waterways from pollution and bring information about water quality to their communities.

[Save Our Streams](#) monitoring occurs each month from March to November currently alternating between Ballenger Creek and Tuscarora Creek. Check the date and location on our [Chapter calendar](#). Please email stephen.meyer7@gmail.com if you wish to observe or participate. Below are the 2024 test dates:

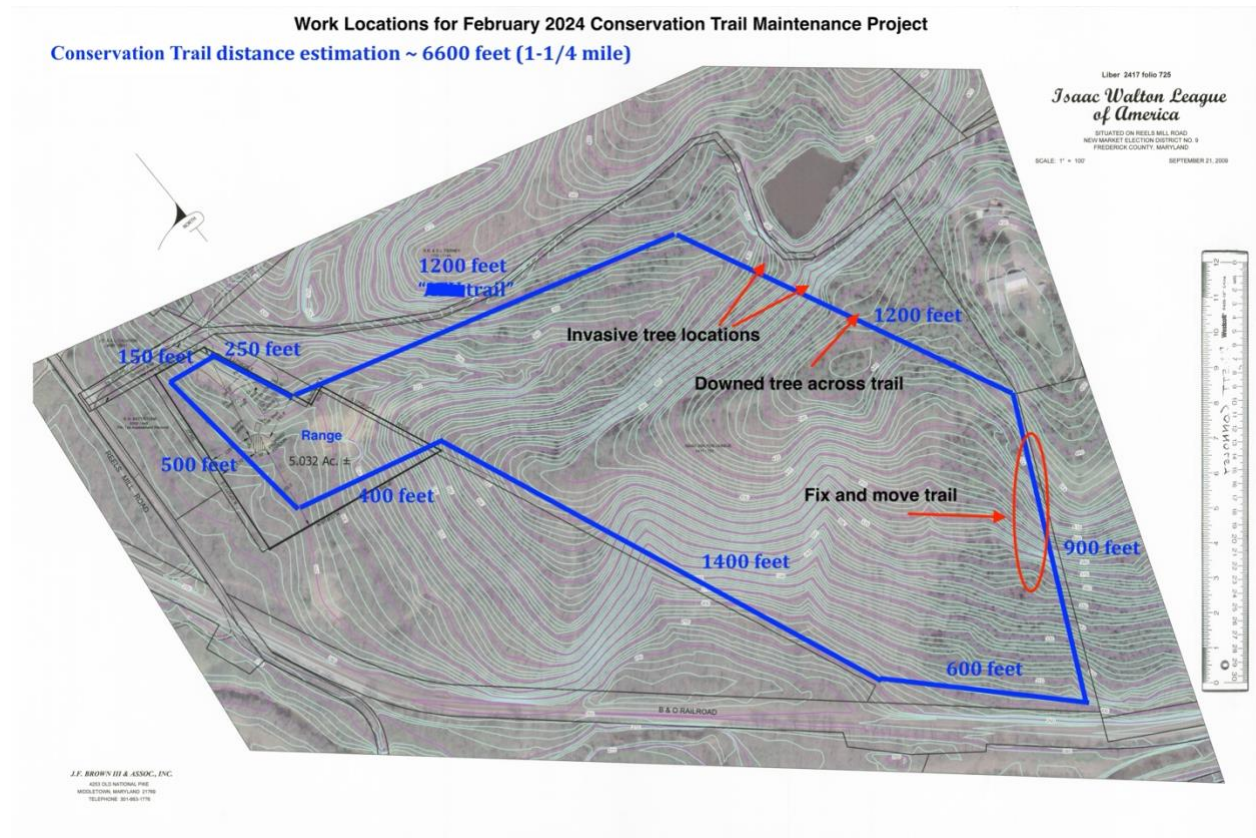
Save Our Streams testing dates for 2024:

- 10AM Saturday March 30, Ballenger Creek
- 10AM Monday April 29, Tuscarora Creek
- 9AM Saturday May 25, Ballenger Creek includes macroinvertebrates
- 10AM Monday June 29, Tuscarora Creek
- 10AM Saturday July 27, Ballenger Creek
- 10AM Monday August 26, Tuscarora Creek
- 9AM Saturday September 28, Ballenger Creek includes macroinvertebrates
- 10AM Monday October 28, Tuscarora Creek
- 10AM Saturday November 16, Ballenger Creek



We will have a **Conservation Trail Maintenance Work Event** on Saturday, February 10, 2024 from 7:30am to 12pm. Please arrive at the Clubhouse by 7:30am, and bring your chainsaw, branch loppers, and hedge clippers. Our primary goals are to fix and move the Conservation Trail that is parallel to the neighboring horse trail so that it does not encroach upon the horse trail and clear a few trees that have fallen across the path.

This forestry and silviculture work is vital to the maintenance of our property, conducted in accordance with our property Conservation Easement and DNR supplied Forest Management Plan, and attending will earn a membership participation point for a sponsored chapter work event.



Frequent snow is predicted for Winter 2023/2024. Each year, the roads are salted during the winter leading to saltier and saltier waterways due to runoff. That in turn can lead to detrimental effects to our environment, infrastructure, and drinking water! The Izaak Walton League needs your help measuring the impact road salt is having on our creeks and streams. You can be ready for Salt Watch by ordering your [free test kit](#) from the IWLA website.

If you have ideas for conservation projects or would like to participate in our conservation programs, please contact the Conservation Committee at iwlafred1conservation@gmail.com. If you would like to participate in Chapter Conservation Committee activities, please attend our monthly Conservation meeting at the Chapter. Next meeting is Monday, February 5th at 6pm in the Clubhouse.

Aquatic Life Water Quality Criteria



According to IWLA Salt Watch Coordinator Abby Hileman and the EPA's 1988 [Ambient Aquatic Life Water Quality Criteria For Chloride](#), chloride levels at or above 100ppm are likely caused by anthropogenic sources in freshwater ways. However, that number can be much lower in different regions. For simplicity's sake, we consider anything under 100ppm to be "good," keeping in mind that some waterways should be significantly lower. At or above 230ppm is chronically toxic to some freshwater life. 250ppm is the secondary standard of drinking water, the level at which water starts to taste "salty" or "off" to us.

BOARD OF DIRECTORS NEWS

Mandatory Range Standard Operating Procedure (SOP) Briefing

Per the Chief Range Safety Officer, there will be a mandatory Gun Range Standard Operating Procedure (SOP) Briefing required in January. Dates will be announced. Two briefings will be scheduled.

Chapter Rules Changes & Reminders

The following rule changes were finalized and adopted by Membership vote on November 14th and will take effect January 1, 2024. The main purpose of these changes is to help entice new prospective members to join as well as ease the burden on current members in hopes to maintain .

Objective: To increase membership numbers and club participation by removing barriers which may hinder new members joining, renewing, or actively participating in club activities.

Goal: To distinguish our chapter from what similar clubs in the area can offer its members.

The following take affect *January 1, 2024*.

Hunter Eligibility: Goal is to promote increased participation of those members who take advantage of the club's hunting privileges.

Amend **Section 5:1 – Rules of The Hunt** – to add the following language:

1. Be a member in good standing (dues up to date)
2. Attend (4) or more monthly membership meetings prior to requesting their initial hunt for the season.
3. All hunters are required to complete points requirements regardless of age for the privilege of hunting the property. Members must complete 50% of their required points before they are eligible to sign up or hunt the club property.
4. Delete Section 4:4 – May only hunt once a week. (Section 4:1 Location and Time Selection; already ensures a fair and ordered selection process. Limiting any member to hunt only once a week is arbitrary and capricious.)

Membership Dues Reduction: Goal is to evaluate barriers to new or continued membership with the need for club participation. The objective is to gain new members and maintain legacy members.

1. Introductory New Member 1st year due structure discount of 50% (Attracts new members without the financial burden or risk)
2. Remove any initiation fee. Currently it is \$75.00. (Again, this lessens the financial commitment to new members and potentially brings back old or lapse members who are opposed to having to pay the initiation fee again.)

Service Hour Requirement: Goal is to evaluate barriers to new or legacy members with the objective of increasing membership and participation. The objective is to gain new members and maintain legacy members.

Participation Requirement: Each member (or Family) is required to accrue 12 participation points annually.

1. Members earn 1 point for each monthly membership meeting attended (12 points max).
2. Members can earn 1 point for each sponsored activity attended (12 points max). This includes Conservation activities, Book Management, YHEC, and Course Instruction etc.
3. Members earn 2 points for each quorum critical meetings (Annual Budget & Annual Nominating meeting).
4. Members earn up to 4 points for each chapter designated event attended (Fund Raising, Recruiting, Division Meetings, Etc.). This can be pro-rated to include prep work, set-up, take down and clean-up.
5. Members earn 1 point for every hour they engage in a sponsored chapter workday.
6. Participation Points will be recorded utilizing the chapters established validation process.

Individuals: \$105 (current rate) – **AND-** 12 points earned –**OR-** \$260 (current rate)

Family \$157.50 (current rate) – **AND-** 12 points earned –**OR-** \$315 (current rate)

The Chapter By-Laws have changed to be in line with National rules requiring members to renew memberships by December 31 to remain in good standing.

The Frederick Chapter Board of Directors meets the second Tuesday of each month at 6:30pm just prior to the regular Membership Meeting. Members are welcome and encouraged to observe these open meetings which address the business of the Chapter. Members may bring up any issues they may have during the Membership Meeting directly after the Board meeting.

CHAPTER EDUCATION PROGRAMMING

The full schedule of courses conducted at the Chapter Clubhouse is posted on the Chapter website. Proceeds from training classes support the Frederick Chapter Youth Program. Contact Ben Kelkye (ben@kelkye.com) if you have any questions about the schedule or courses.

Below are courses offered at the Frederick #1 Chapter for February and March:

**** Classes from January thru March will be cancelled and rescheduled during Frederick County Snow Emergencies ****

Date	Start Time	End Time	Course	Cost
Sunday, February 25, 2024	12:30 PM	4:30 PM	Youth Program	
Thursday, March 7, 2024	6:30 PM	10:00 PM	Hunter Safety Classroom	\$0.00
Friday, March 8, 2024	6:30 PM	10:00 PM	Hunter Safety Classroom	\$0.00
Saturday, March 9, 2024	7:45 AM	Finish	Hunter Safety Classroom	\$0.00
Sunday, March 10, 2024	12:30 PM	4:30 PM	Youth Program	
Saturday, March 16, 2024	7:30 AM	Finish	RSO	\$175.00
Sunday, March 24, 2024	12:30 PM	4:30 PM	Youth Program	

Contact Ben Kelkye to schedule an appointment. Cell: 301-401-6262 Email: ben@kelkye.com				
<i>By Request Only</i>	<i>Appointment</i>	<i>Only</i>	<i>Wear and Carry - 16 Hour Class for new applicant - MD or DC</i>	<i>\$275.00</i>
<i>By Request Only</i>	<i>Appointment</i>	<i>Only</i>	<i>Renewal - 10 Hour Class - MD or DC</i>	<i>\$225.00</i>
<i>By Request Only</i>	<i>Appointment</i>	<i>Only</i>	<i>MD & DC - Wear and Carry - 16 Hour Class for new applicant</i>	<i>\$415.00</i>

Hunter Education



All states require first-time hunters to pass a hunter education class before they can apply for a hunting license. These classes are about more than gun safety. Classes may also cover wildlife identification, first aid and wilderness survival, map and compass skills, hunter ethics and responsibilities, wildlife conservation and management, and landowner relations. Each state has different requirements on the age at which a hunter can (and must) complete a hunter education course and whether a refresher course is required for experienced hunters. Choose your state to find information about hunter education classes near you. [Learn more about hunter education at this Department of Natural Resources link.](#)

MORE FROM AROUND THE CHAPTER

Send any submissions to newsletter@frederickiwa.org

Frederick #1 Chapter on the Radio



If you missed Ben Kelkye interviewed by Bob Miller with Chris Michaels on WFMD 930AM radio during their Christmas Cash for Kids broadcast on Wednesday, November 29th at 4:12pm, you can watch the interview by clicking this link to the WFMD Facebook page for the "[2023 WFMD Christmas Cash for Kids - Wednesday Afternoon](#)". Fast forward to 50:22.

CLASSIFIEDS / WANT ADS / NEEDS AT THE CHAPTER

Send any submissions to newsletter@frederickiwa.org



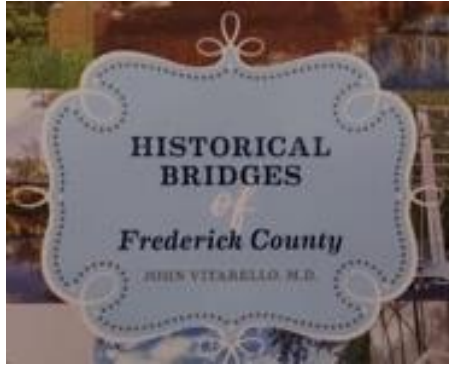
Photos wanted of Chapter clubhouse and grounds, Chapter activities, shooting sports, and conservation programs to be used for marketing and recruitment. Please send to newsletter@frederickiwa.org.



Get your new IWLA Frederick Chapter 100th Anniversary shirts, official swag and uniform for Frederick Chapter events. These heavy cotton quality shirts are \$15. Shirts are currently sold at the Clubhouse and Membership meetings.



Please let us know what you are doing in the outdoors, enjoying nature, and being a champion and defender of the nation's soil, air, woods, water, and wildlife. If you would like to participate in nature outings, please let us know at newsletter@frederickiwa.org.



On sale at the Clubhouse is the book *Historical Bridges of Frederick County*, written by Frederick Chapter member Dr. John Vitarello containing 99 pages of photographs coupled with information about each of the bridges and their connection to Frederick County's history. There are also driving, bicycle and fishing tour routes included to aid readers who will be inspired to seek out the bridges themselves. Each book is \$20. Purchase of each book helps fund the Frederick Chapter's conservation programs. According to Dr.

Vitarello, "Individuals, service groups and charitable organizations alike have made an everlasting favorable impression on me to the point that I want to dedicate this book to local Frederick charities." Books can be purchased at the Frederick Chapter clubhouse. Please see Ben Kelkye.